

(Yet another talk on)

# STAC, and how it's making our lives easier



Chris McNeill – Geospatial Solutions Architect  
Satellite Applications Catapult

We work with  
**Innovate UK**

**CATAPULT**  
Satellite Applications

# SATELLITE APPLICATIONS CATAPULT

## Who **we** are

We are a not-for-profit innovation and technology company transforming the way the world uses satellite technology and data.



**WE ARE  
INDEPENDENT**



**WE ARE  
GOVERNMENT BACKED**



**WE HELP  
GROW BUSINESSES**

## Our **technology** focus



**UBIQUITOUS  
CONNECTIVITY**



**GEOSPATIAL  
INTELLIGENCE**



**LOCATION DATA &  
AUTONOMY**



**ACCESS TO  
SPACE**

### APPLICATIONS



## Our **expertise**

**USER CENTRED  
DESIGN TO SUPPORT  
NEEDS DRIVEN  
INNOVATION**

**MARKET  
INTELLIGENCE AND  
WIDE SECTOR  
NETWORK**

**SATELLITE DATA  
CAPABILITIES &  
TECHNOLOGY  
INTEGRATION**

**SERVICE  
ACCELERATION FOR  
RAPID MARKET  
TESTING**

**STRATEGIC SUPPORT  
FOR **COMMERCIALY**  
**SUSTAINABLE**  
**GROWTH****

# OUR STRATEGIC VISION



## ENERGISING THE MARKET

Through our market programmes we unlock latent customer demand, open new markets, and drive exports by raising awareness, changing preconceptions and showcasing the power of space derived services.



## EMPOWERING TECHNOLOGY

Through our technology programme we help companies advance their products to be closer to market programme opportunities by identifying the barriers to entry such as regulation, incumbents, or simple accessibility.



## ENABLING BUSINESS

We connect business of all sizes with the resources and facilities they need to launch and grow, opening new routes to market and attracting inward investment. We provide targeted business support, user-centred design expertise and signposting to finance.



# GEOSPATIAL INTELLIGENCE

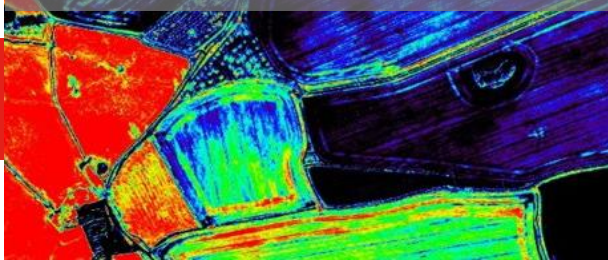
## Earth Observation data ubiquitous in everyday decision making

**Mission:** *to accelerate the adoption of geospatial analytics into business processes, at a scale that drives value across industries globally.*

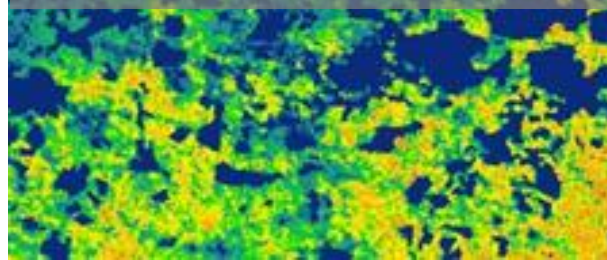
- *Thought leadership* in development of geospatial solutions in collaboration with the Space Sector.
- *Strategic education* to enhance capabilities, skills and awareness for other industries.
- Unlocking investment for *transformative innovation* projects.
- Supporting *technology commercialisation*.



Vegetation Dynamics



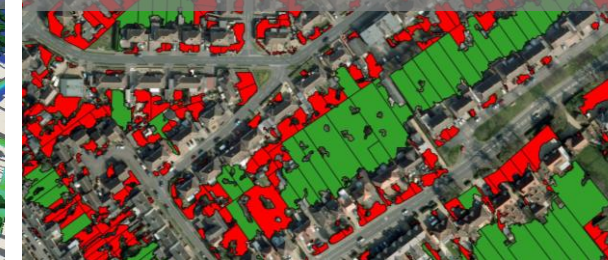
Biomass



Air Pollution



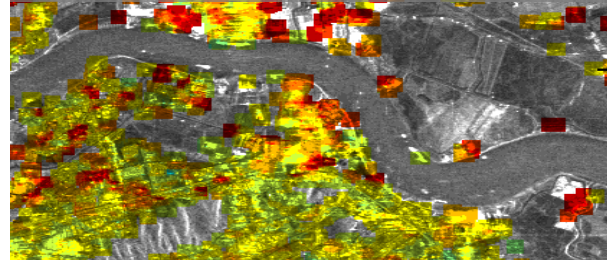
Renewable Energy



Sustainable Finance



Geotechnics



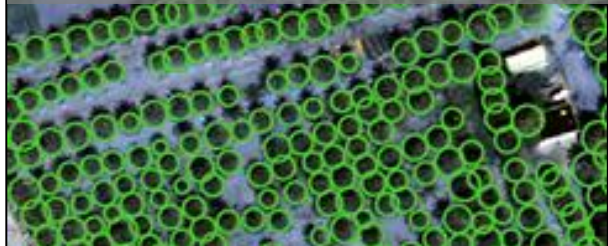
Ecosystem Services



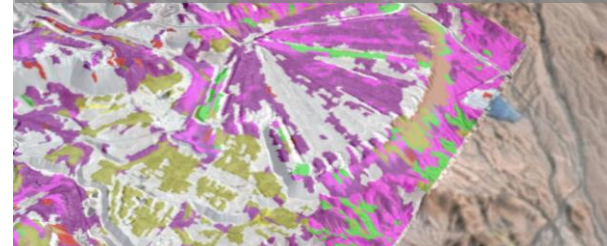
Environmental Risk



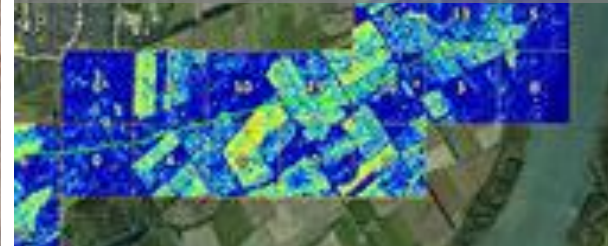
Tree Counting



Geology



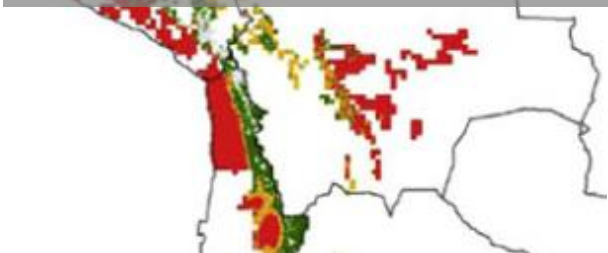
Utilities



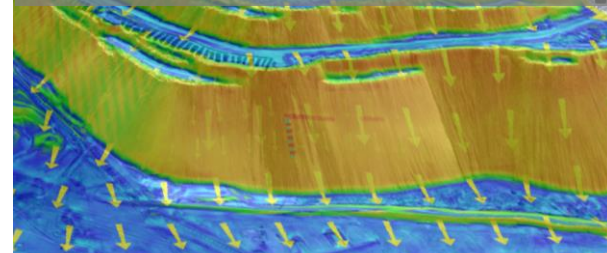
Urban Development



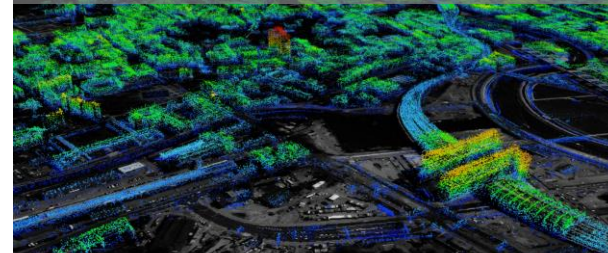
Pest and Disease



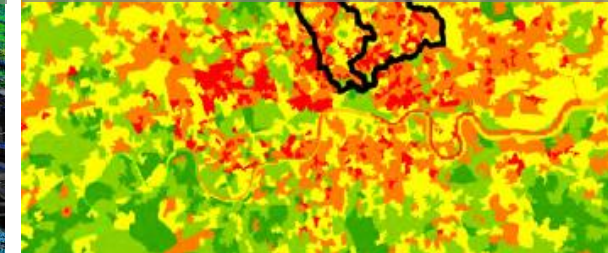
Elevation Models



Critical Infrastructure

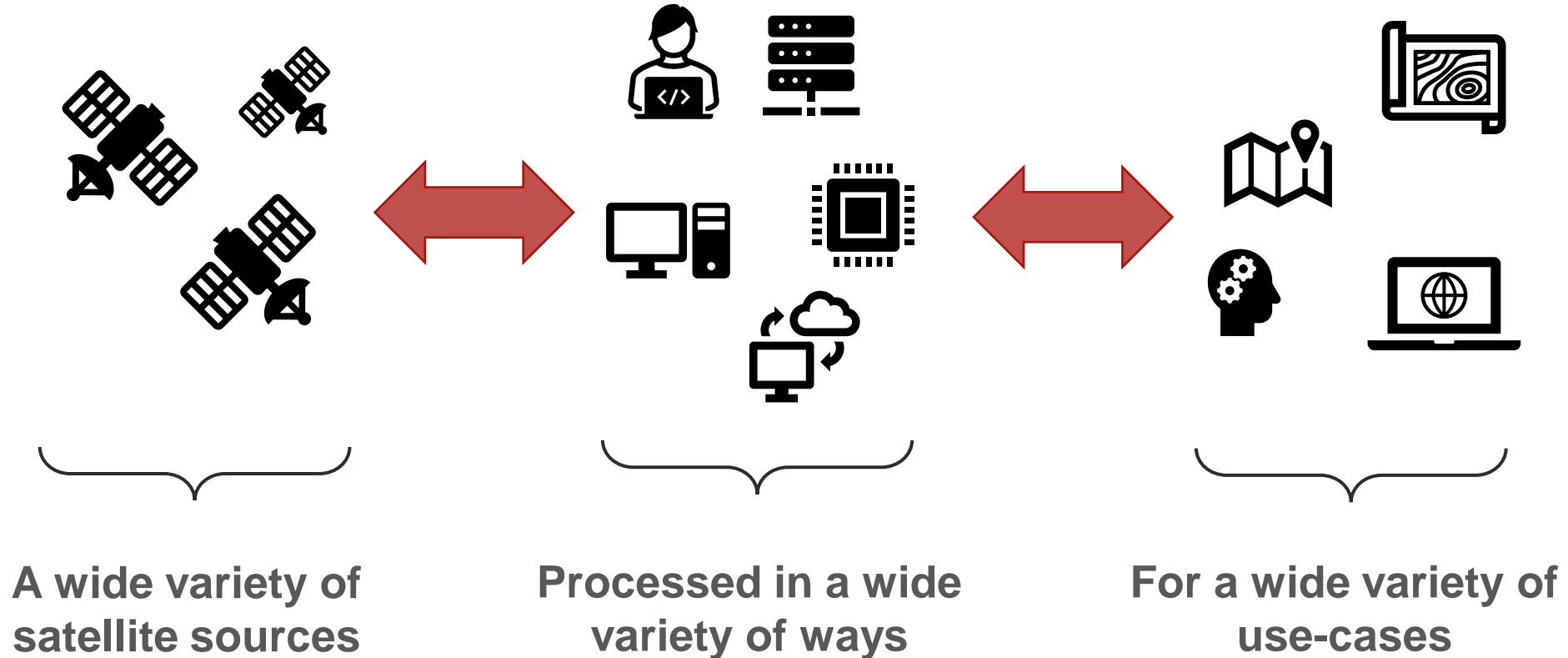


Health





## What do we do with EO data?



***Wouldn't it be great if there was a standard, open way for data to be managed in these systems***

# What is STAC

STAC

## SpatioTemporal Asset Catalogs

The STAC specification is a **common language to describe geospatial information**, so it can more easily be worked with, indexed, and discovered.

*from stacpec.org*

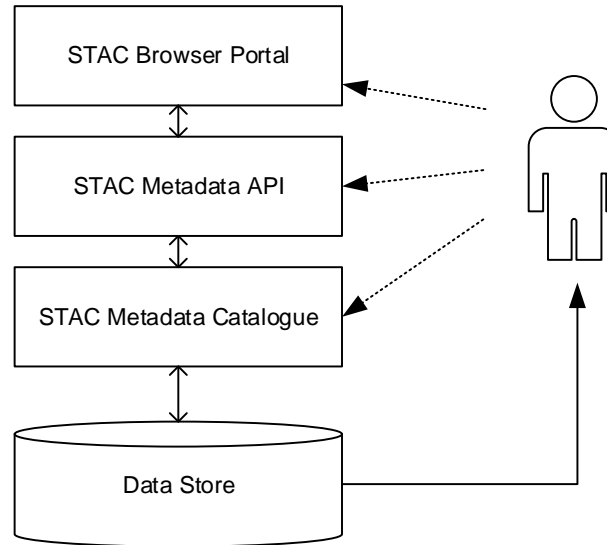
**Data Providers** –  
uniform and standard  
way of cataloguing and  
exposing assets

**Developers** – simplify  
building data  
management solutions  
and make re-usable tools

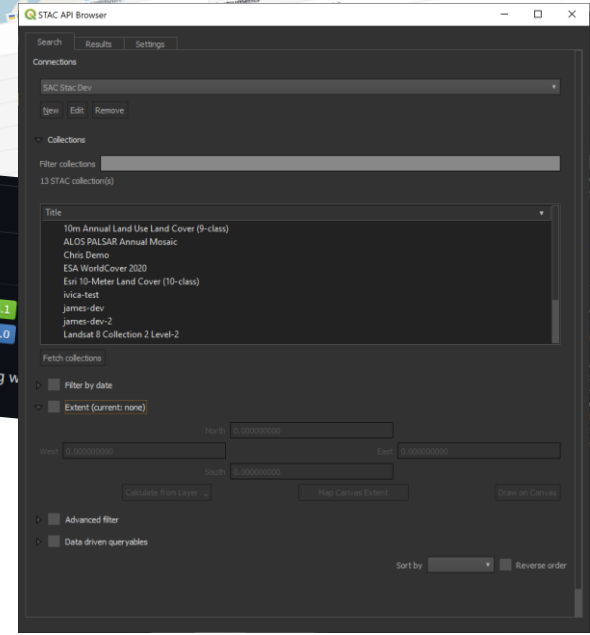
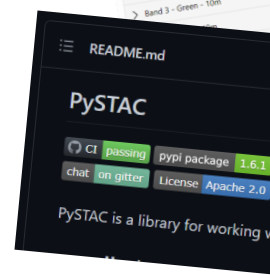
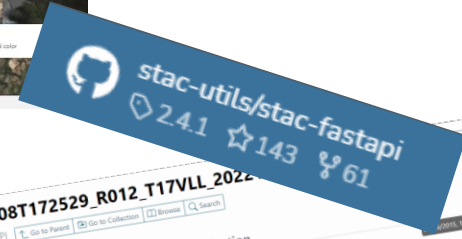
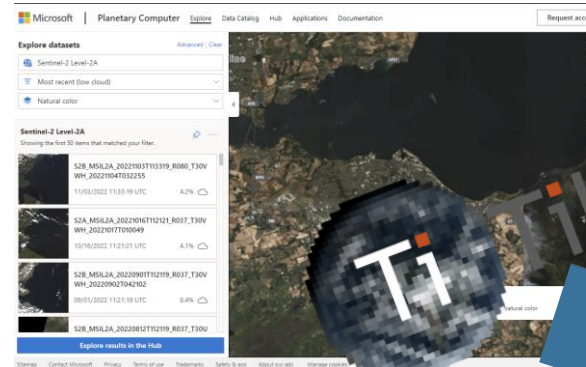
**Data Users** – make use  
of common tooling, save  
time. Do real work rather  
than data management!

# We love STAC!

- Build what you need
- Plug & play



Flexible foundation for applications, desktop GIS workflows and data scientists



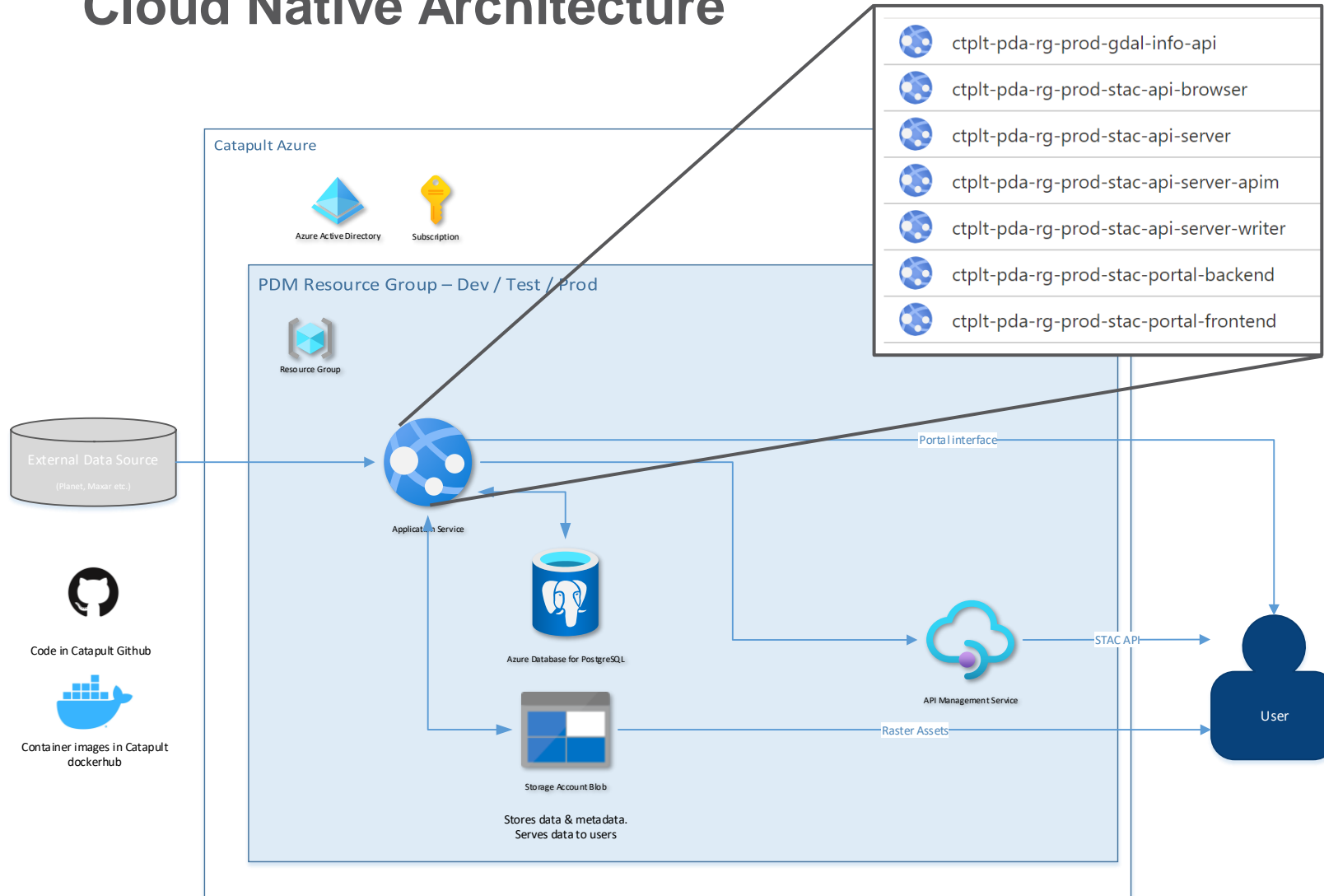


# Catapult's STAC Portal

- Getting the most out of already available, public data
- Managing the data we've already got

The screenshot displays the Catapult STAC Portal interface. On the left is a dark sidebar with the 'STAC Portal' logo and navigation options under 'MANAGER' (My Catalog, Add Public Catalog, Add Private Collection, Load Local Data, Update Collections, Load Status, Public Catalogs) and 'UTILITIES' (Validator, Apps). The main content area is titled 'Searcher' and includes a search bar, a date range selector (Start Date: 11/09/2022, End Date: 11/09/2022), and a 'SEARCH' button. Below these is a map of Europe with a blue polygon indicating the Area of Interest (AOI). At the bottom, there is a table header with columns: Title, Description, Catalog, and Load.


# Cloud Native Architecture



- Built in Azure, but uses cloud agnostic approaches
- Incorporates best bits of the STAC ecosystem
  - stac-browser
  - stac-fastapi
  - GDAL



# Demo Time



STAC Portal

🔍 Searcher

**MANAGER**

- 📖 My Catalog
- + Add Public Catalog
- + Add Private Collection
- ☰ Load Local Data
- 🔄 Update Collections
- 👤 Load Status
- 🌐 Public Catalogs

**UTILITIES**

- 🛡️ Validator
- 🗄️ Apps

🏠 / Searcher
🔍 ⚙️ 🔔

**Searcher**

Use the Area Downloader to choose a date range and geographic area to download STAC data from.

AOI

Click to draw AOI on the map

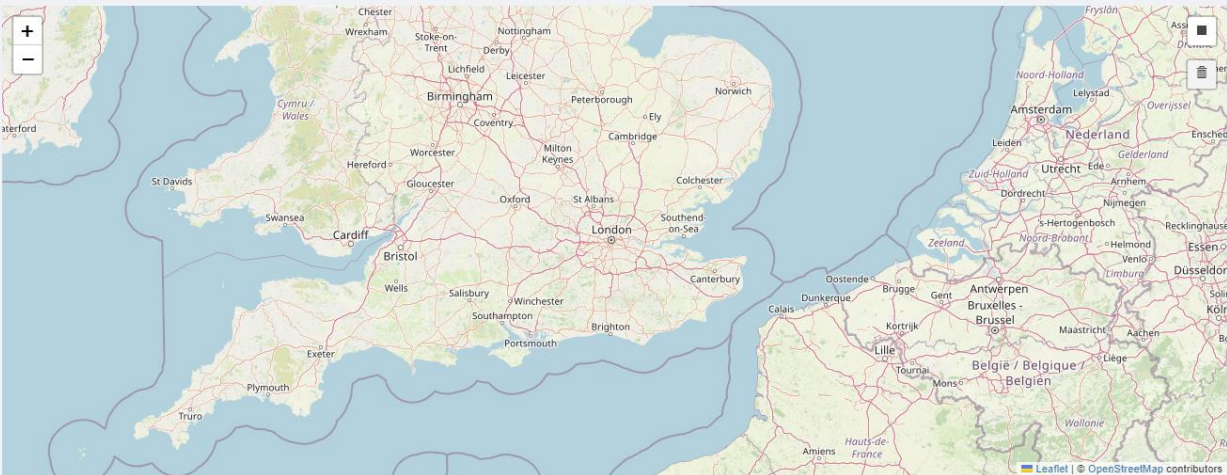
Start Date

11/09/2022 📅

End Date

11/09/2022 📅

🔍 SEARCH



Leaflet | © OpenStreetMap contributors

HIDE MAP

🔍 ☰ ☰ ☰ ☰
⚙️

Title	Description	Catalog	Load
<span style="background-color: white; color: #2c3e50; border-radius: 50%; padding: 2px 5px; font-size: 0.8em;">⚙️</span>			

## Where have we got to with STAC

- It's getting alarmingly easy to build platforms that can compete with some COTS offerings
- But more vendor engagement would make our lives even better

## What do we want to do next?

- Open source
- More data providers
- Better data sharing features (fine grained access control)
- Processing pipelines



# OUR STRATEGIC VISION



## ENERGISING THE MARKET

Through our market programmes we unlock latent customer demand, open new markets, and drive exports by raising awareness, changing preconceptions and showcasing the power of space derived services.



## EMPOWERING TECHNOLOGY

Through our technology programme we help companies advance their products to be closer to market programme opportunities by identifying the barriers to entry such as regulation, incumbents, or simple accessibility.



## ENABLING BUSINESS

We connect business of all sizes with the resources and facilities they need to launch and grow, opening new routes to market and attracting inward investment. We provide targeted business support, user-centred design expertise and signposting to finance.

# Thank you!



SatelliteApplicationsCatapult



@ChrisDoesTech



sa.catapult.org.uk  
spatialdays.com