



Start the Overture

Alastair Graham





Me

- Freelancer
- Podcaster
- OSGeo:UK Committee
- Free software optimist





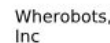
This talk

- Was originally going to be a presentation about configuring a possible geo application
- But started using Overture - want to promote this project and highlight some of the differences with datasets that used to be my 'go to'
- It's a show and tell



What is Overture?

Creating reliable, easy-to-use and interoperable open map data





Landcover

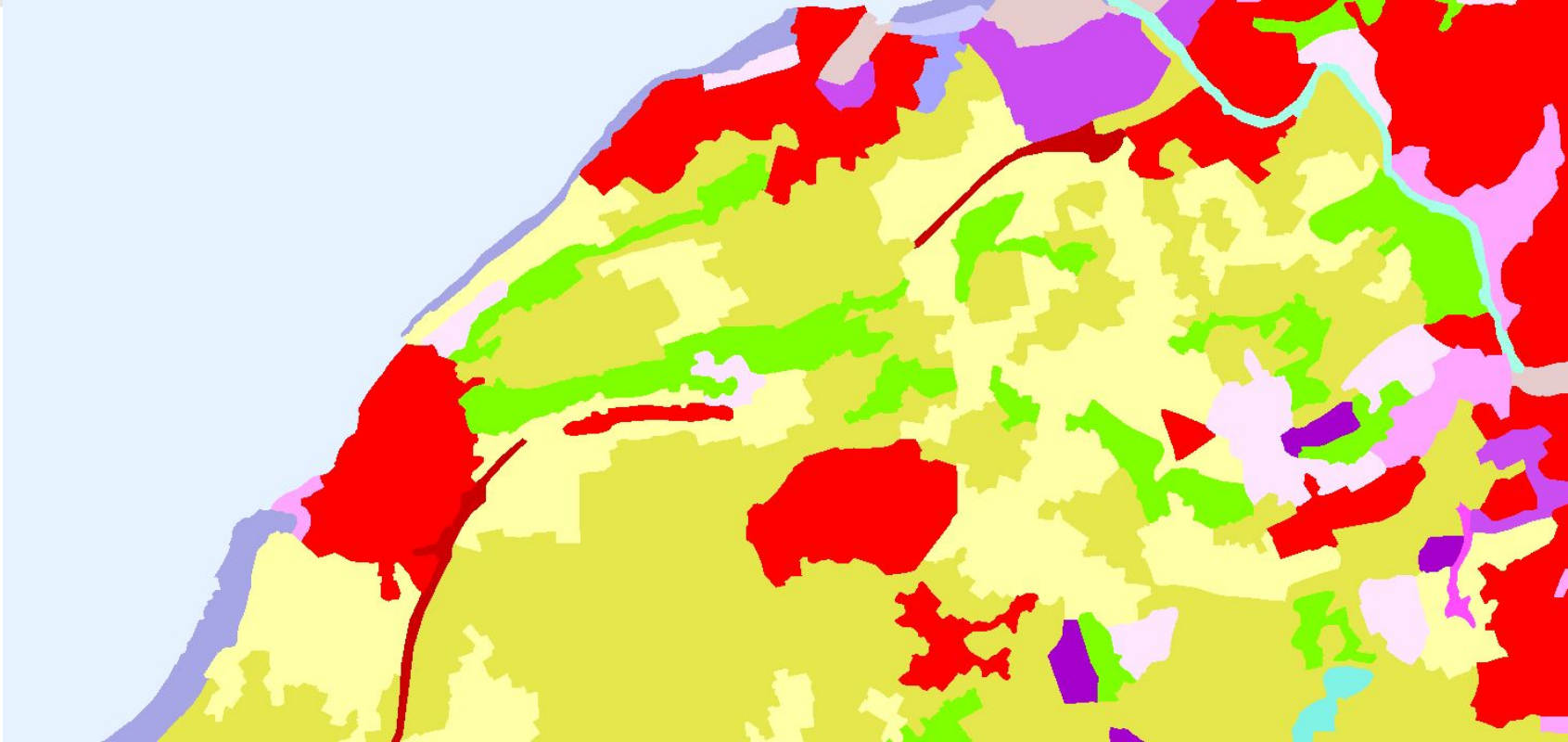


OSM Basemap



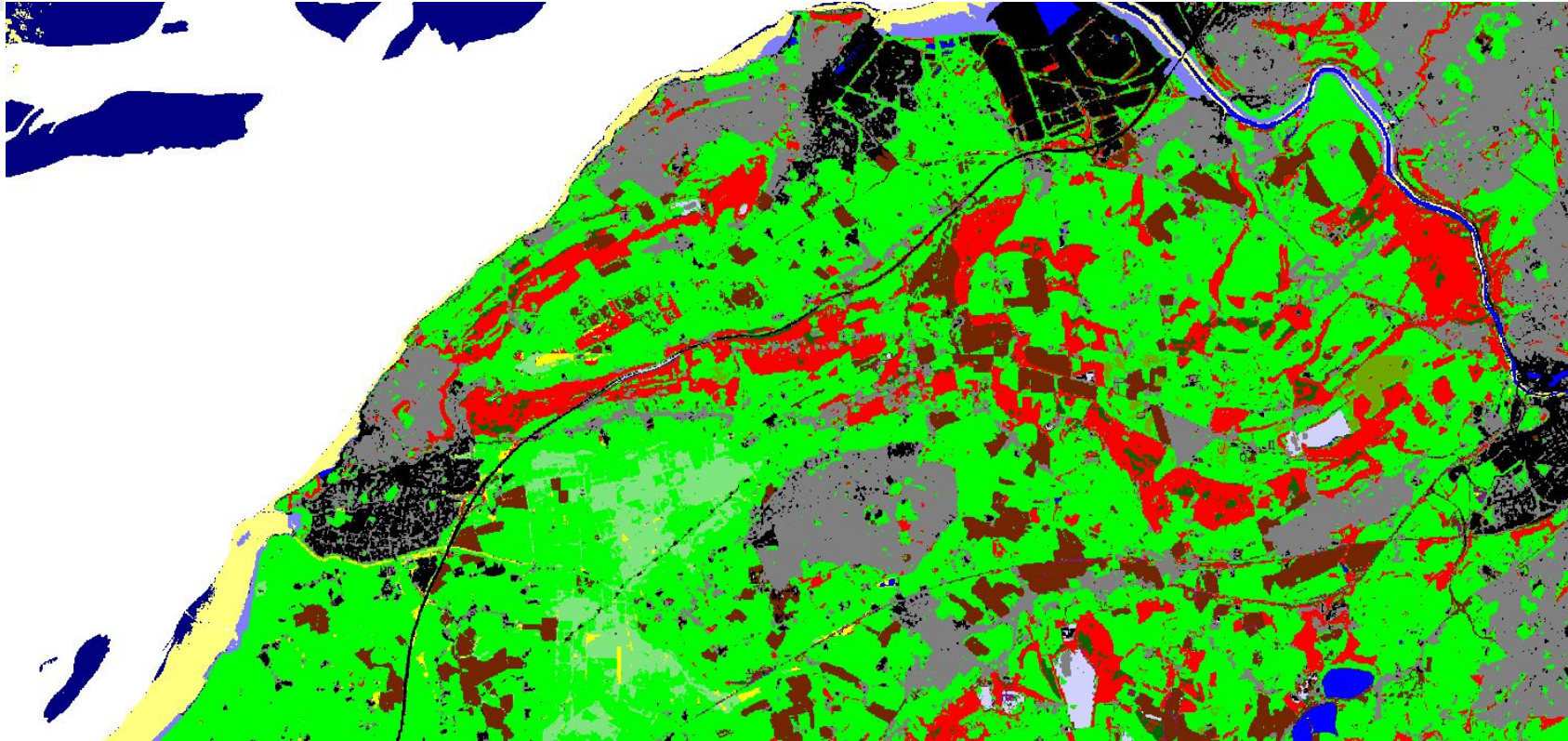
CORINE

- Pan-European land cover / land use with 44 thematic classes
- Updated every six years: most recent update is 2018.
- Minimum Mapping Unit (MMU) of 25 hectares (ha)



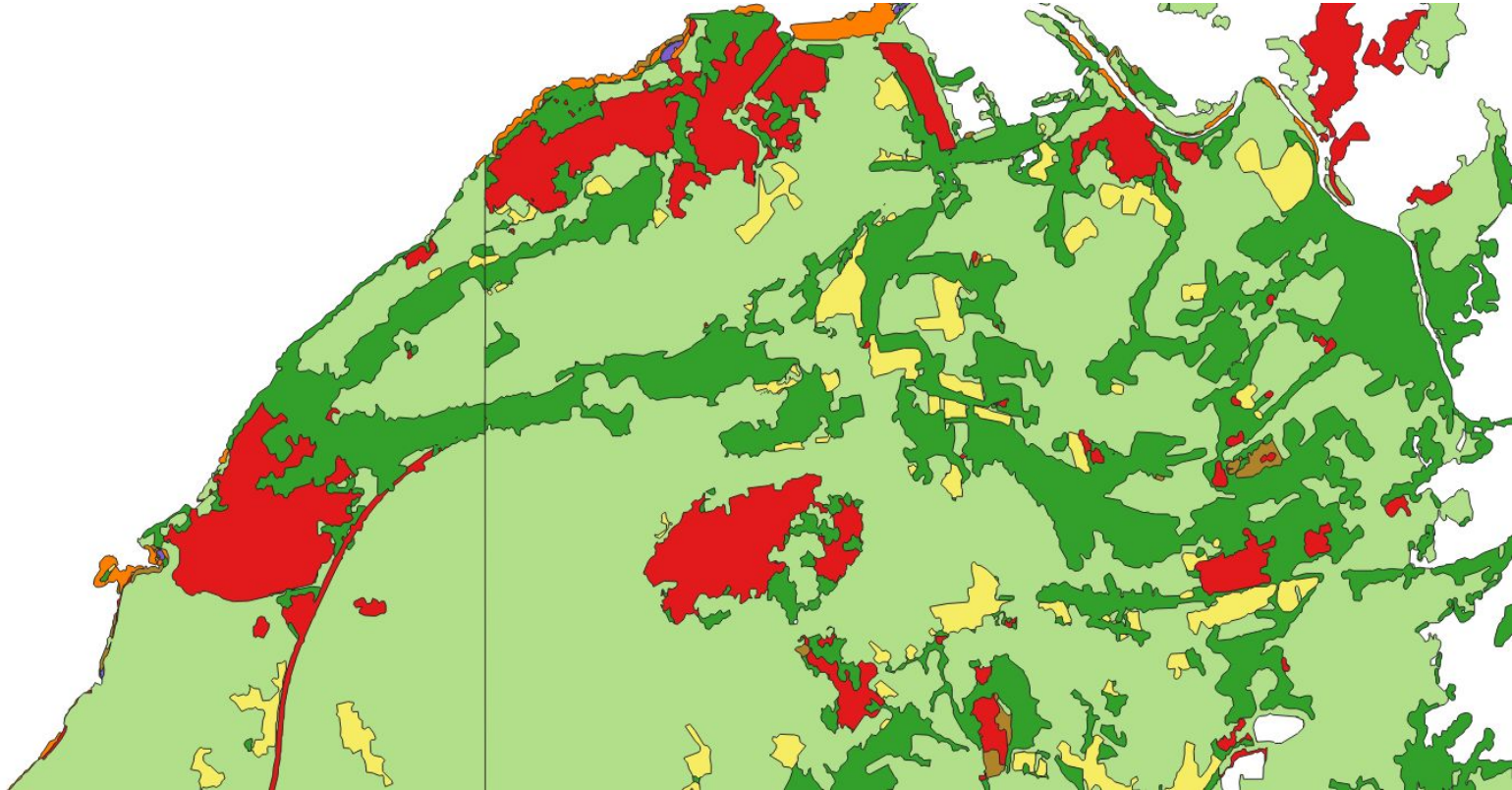
LCM 2023

- UK land cover with 21 thematic classes
- 11 maps since 1990: most recent update is 2023.
- 10m pixels that are summarised at different scales



Overture (ESA WorldCover)

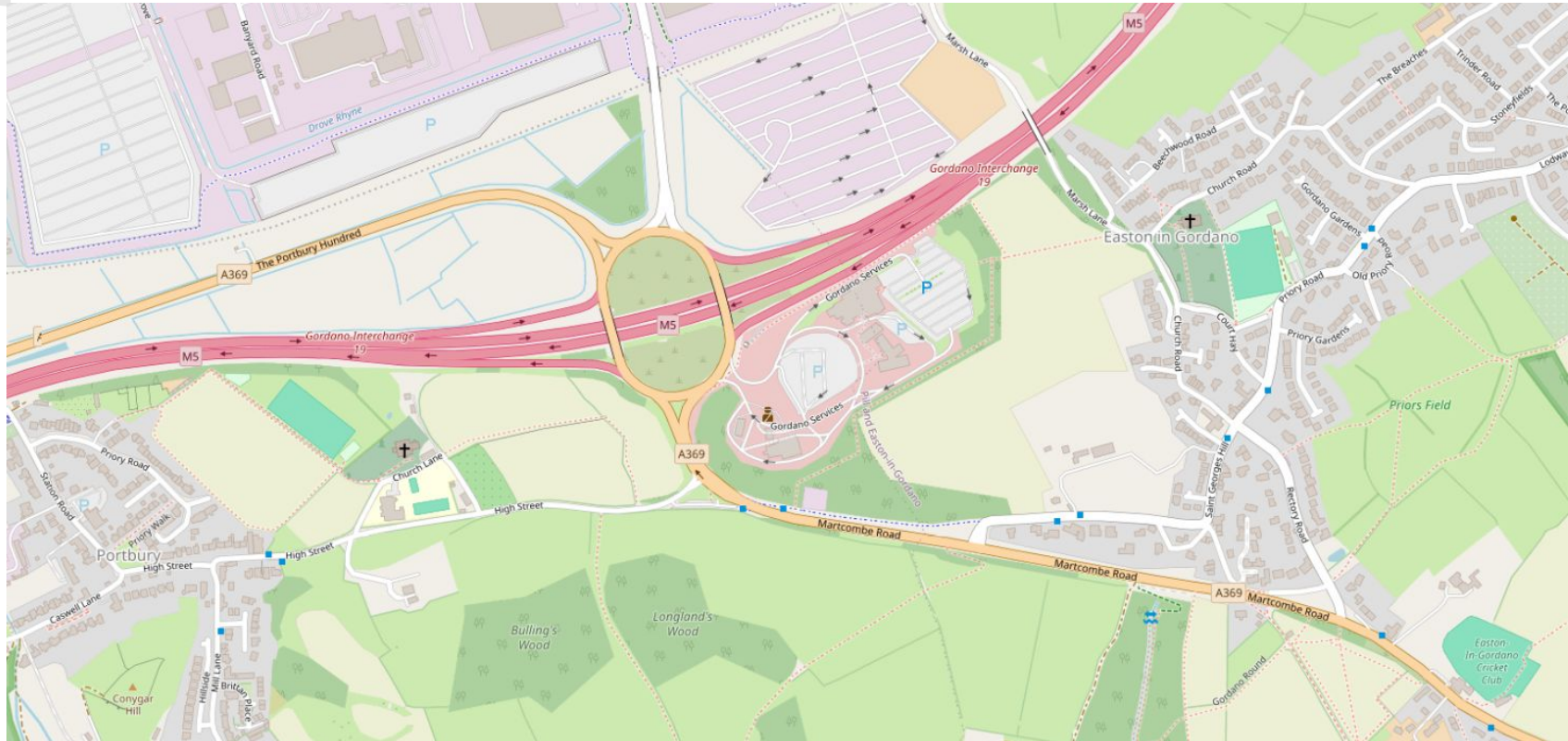
- Global land cover with 11 thematic classes
- Data for 2020 and 2021
- 10m pixels that are generalised into vectors



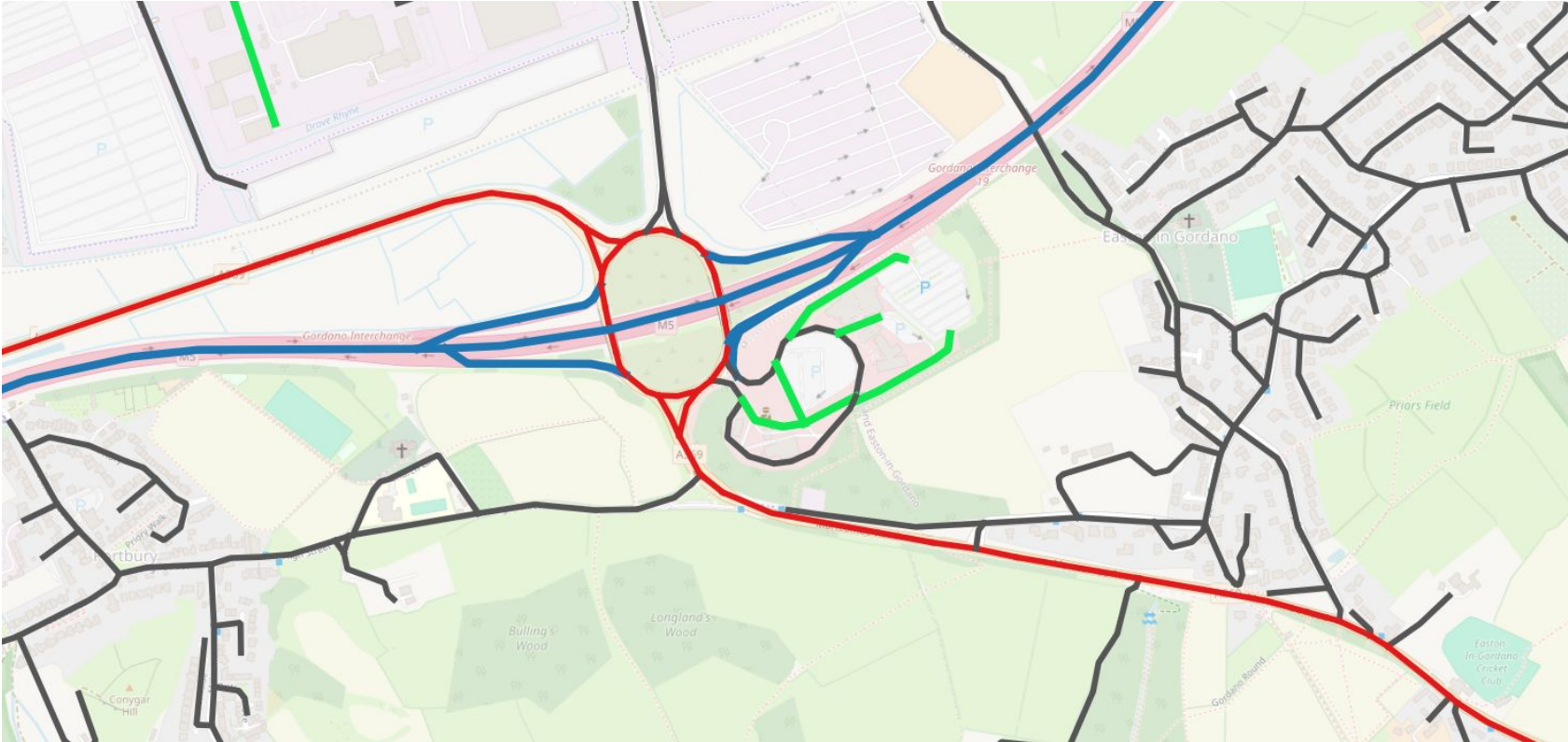


Roads and paths

OSM Basemap



OS Openmap Local



OSM



Overture





Buildings



OSM Basemap



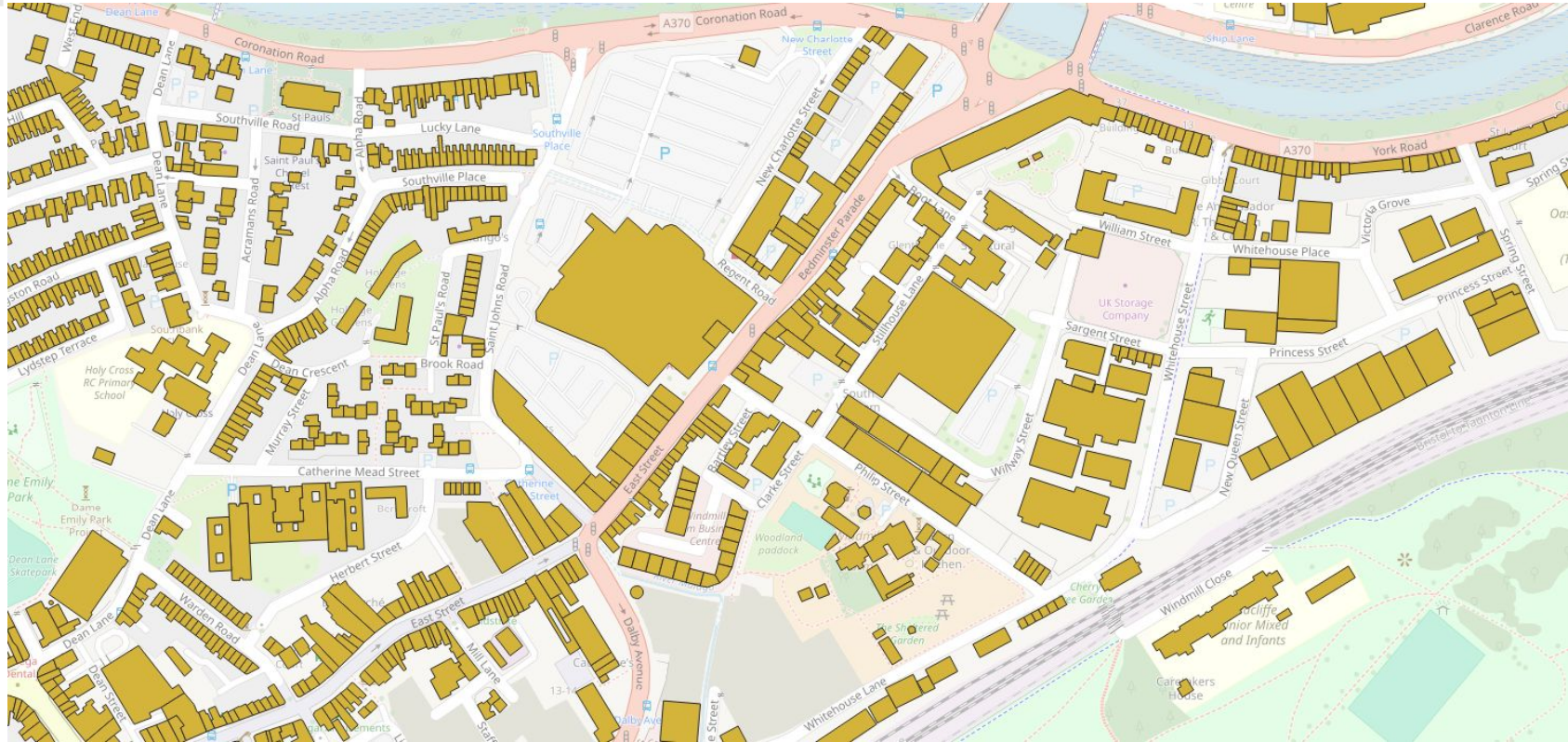
OS Openmap Local



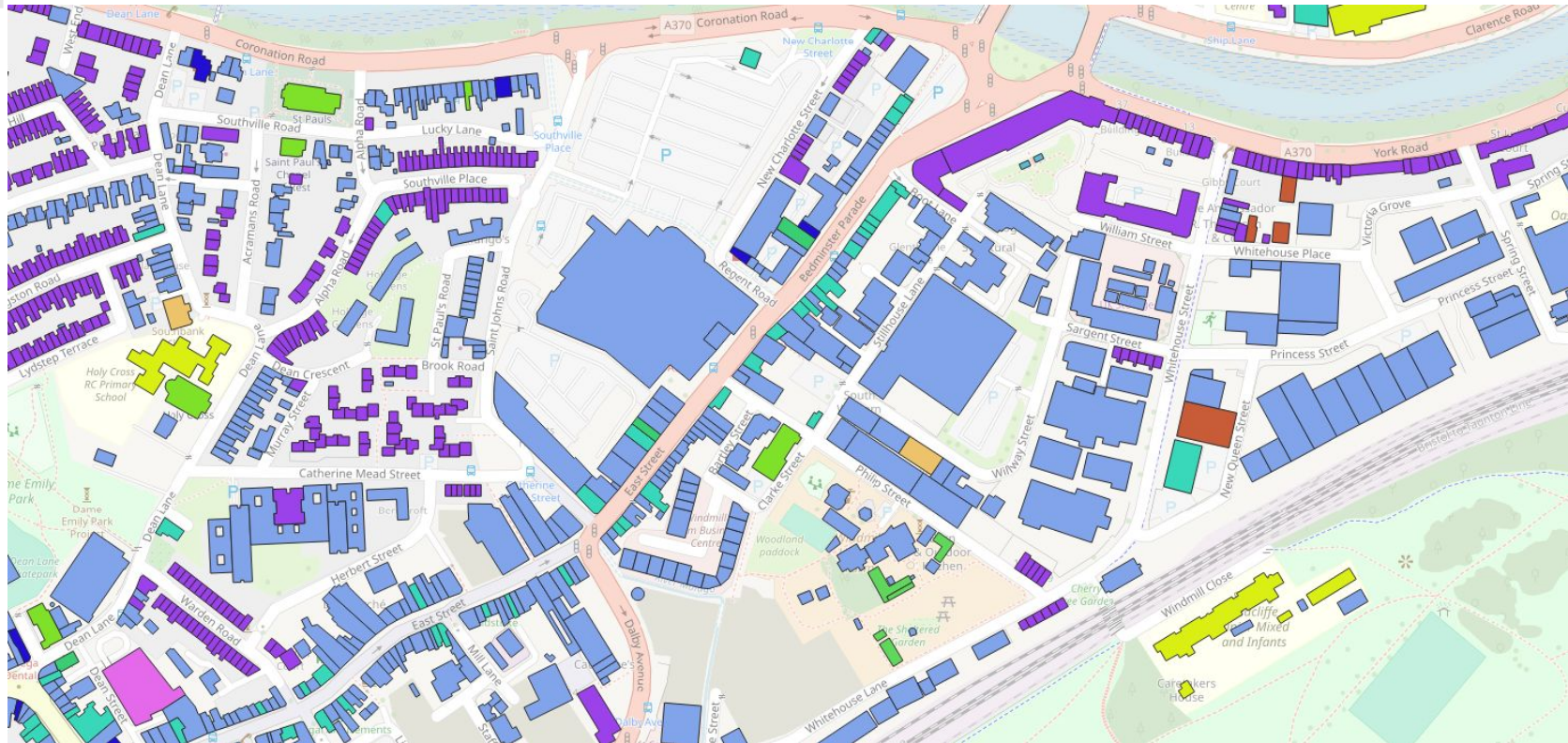
OS Openmap Local & UPRN



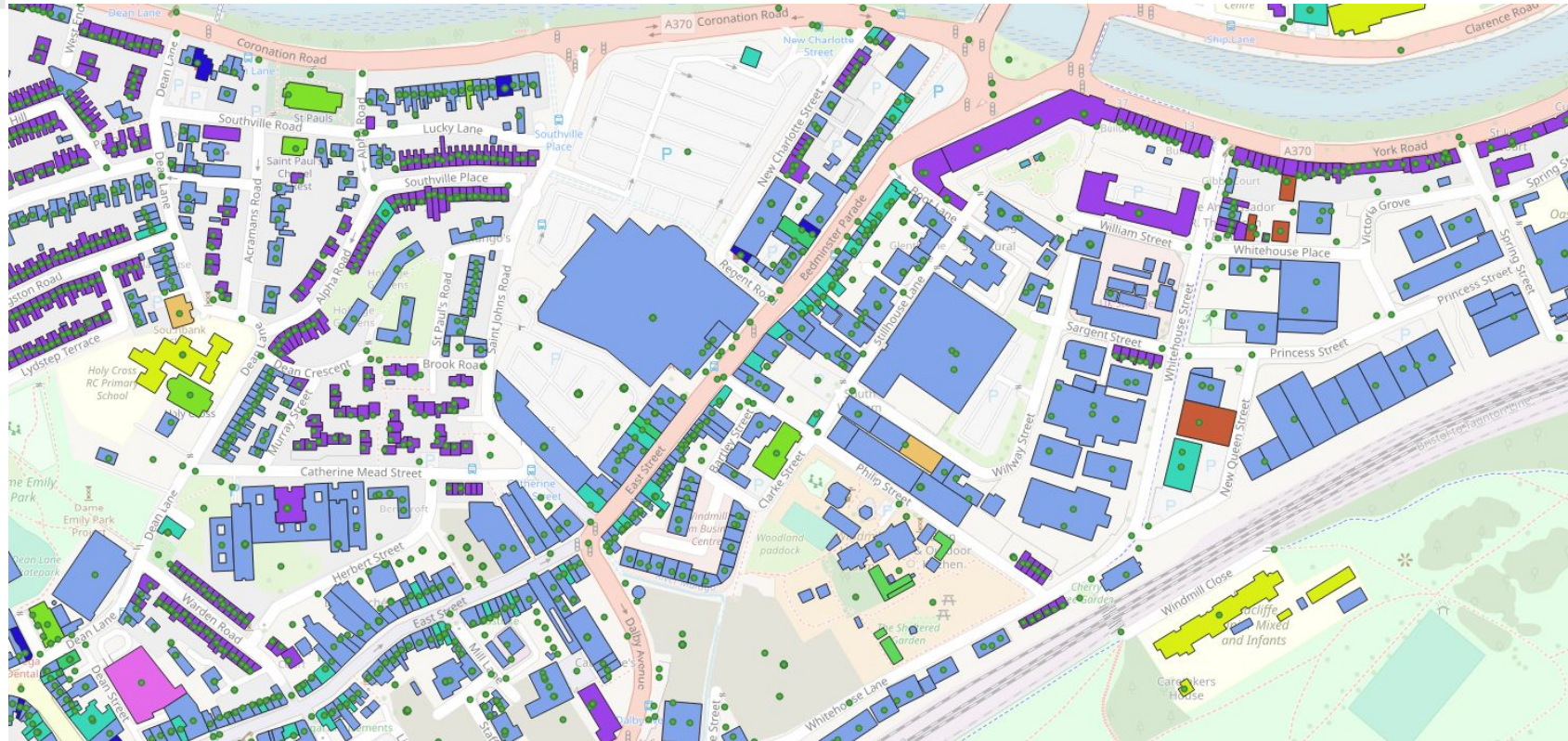
OSM



Overture



Overture & UPRN





Things to know





- Cloud first - it is a bit tricky to get the data
- But supported by modern tools e.g. DuckDB
- Still some need for spatial improvements
- Easy to visualise
- Ever improving coverage
- Major themes are the key ones



Should I use it?

- I will probably replace much of my vector needs with this
- I need to look in a bit more depth at the input data processing methods
- I recommend you look at it too